

AIRWARE
AIR HANDLER HARDWARE



AIRWARE IS PROUD TO PRESENT THE NEW

AIRWARE DAMPER

THE LATEST GENERATION OF BACK
DRAFT DAMPER FOR MULTI-FAN SYSTEMS!

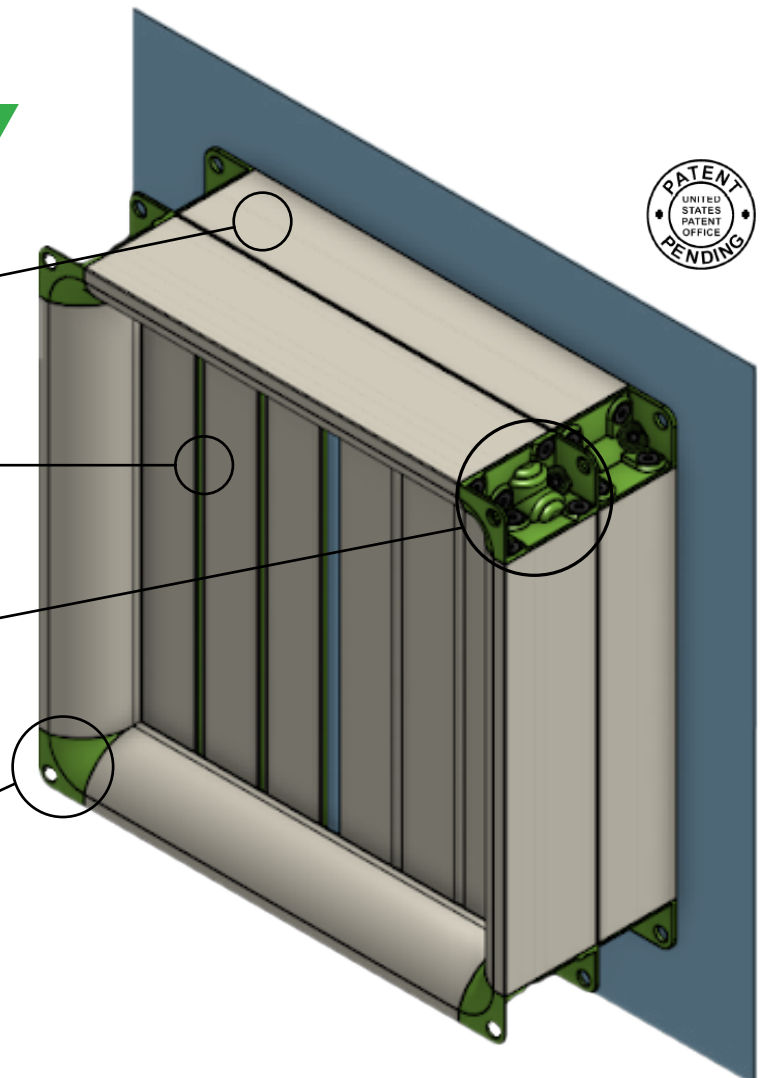
This next generation design includes over a decade of fan inlet damper design experience along with extensive feedback from industry leaders including Owners, Engineers, Contractors, Maintenance groups, Fan & Air Handling Manufacturers. The Airware Damper is nearly transparent to the operation of the fan.

Our patent pending design includes new docking and mounting options to service the customer's needs for the life of their fan system.

This damper is the culmination of listening to customers with the intent of providing the best product on the market.

UNIQUE FEATURES

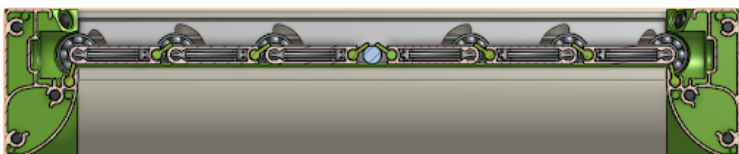
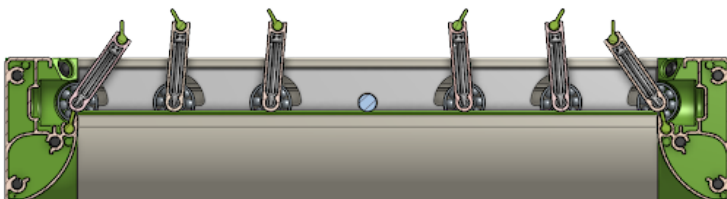
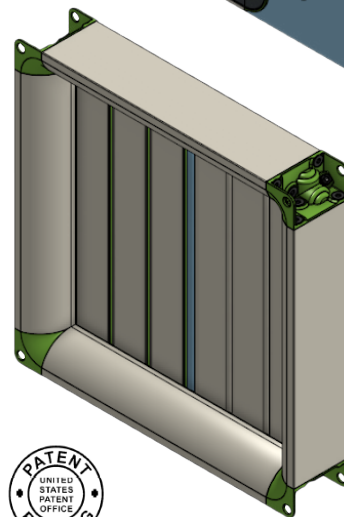
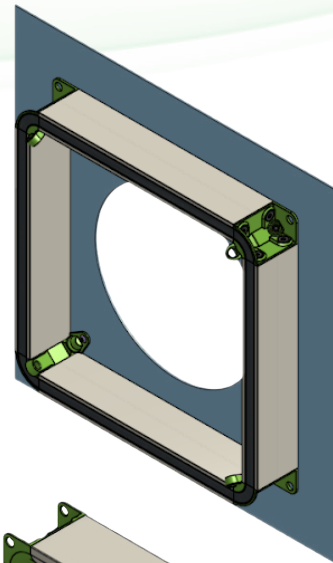
- Matching Dock
- 1" Increment Sizes From 12" to 45"
- Patented Corner Design For Easy Assembly and Maintenance
- Powder Coated Corners - Alternate Colors Available with Pre-Purchase



TAKE YOUR SYSTEMS TO THE NEXT LEVEL WITH THE AIRWARE DAMPER!

Multi-Fan Systems are now common across the industry due to the potential for added redundancy. With multiple fans, this carries a design consideration which shouldn't be ignored. If one fan fails, this creates the ability for air to recirculate through the inoperable fan.

Traditional backdraft dampers are designed, tested and rated in accordance with duct or bulkhead wall mounted applications. Fan mounting these dampers, even with a deep stand-off, causes an adverse system effect not reflected in the damper's original testing and rating data. The result is a 0.25" wg to 0.75" w.g. additional pressure loss not accounted for in the performance of the traditional duct mounted dampers. The building owner will pay for this energy loss for the life of the building.

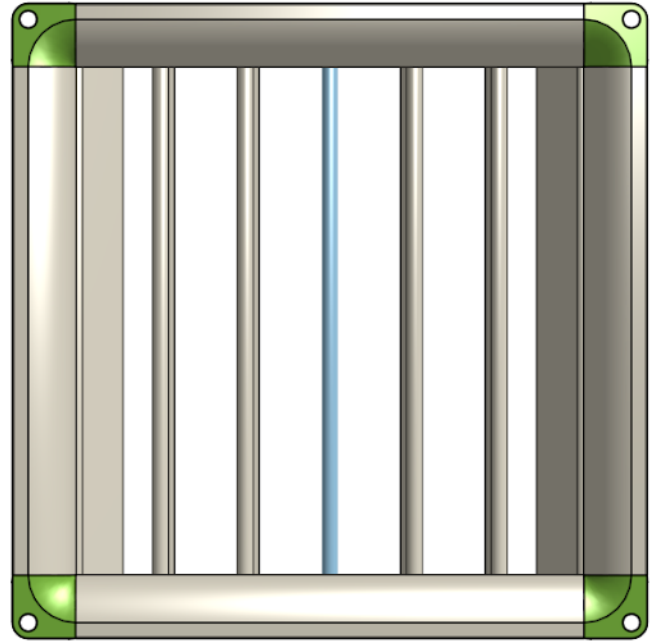


In contrast, the Airware Damper is a new breed of damper, born to be mounted extremely close to the fan inlet. Only adding 5.5" to the face of your fan.

The Airware Damper consists of vertical blades which are not individually linked. This design allows air the most natural path to enter a fan cone, this creates near damperless performance.

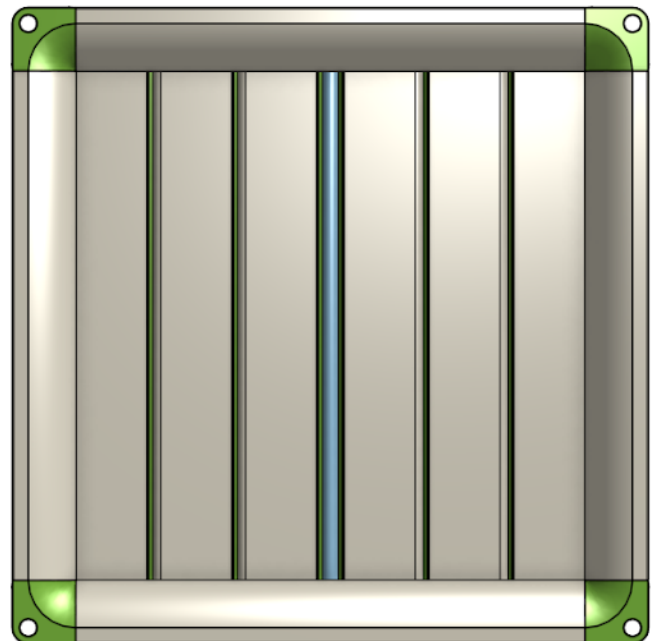
ABOUT AIRWARE

At Airware, our mission is to provide high-quality, purpose-built components for the air handling system industry. The Airware Damper is designed exclusively for fan mounted applications allowing for near damperless performance. While paying close attention to all aspects of its functionality, including serviceability. The patent pending docking and mounting system allow for light, quick and easy single person removal and reattachment of the damper for the lifespan of your fan.



AIRWARE DAMPER SHOWCASES

- Precision Extruded Aluminum Frame and Blade Profiles
- Full Perimeter and Full Blade Edge Rubber Seals
- Stainless Steel Corners, Blade Caps and Bearings
- Most Sizes Capable of +12" wg Static Pressure



Contact us today to learn more about the Airware Damper
Sales@Airwarehvac.com